



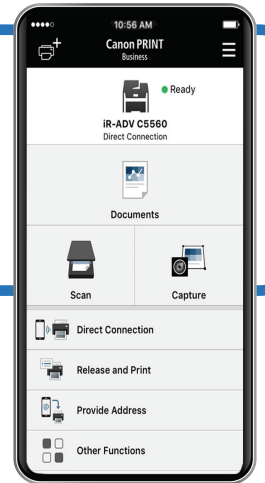
# Print, Scan, And Send With Canon PRINT Business App

Helping To Minimize Touch-Points



Easily **print, scan,** and **send** documents while minimizing unnecessary touch-points on the **imageRUNNER ADVANCE** devices.

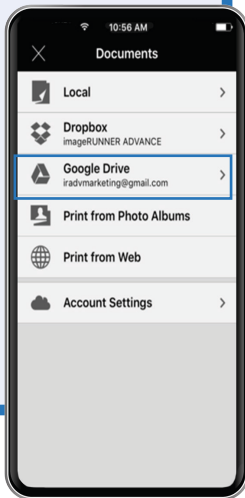
Available as a free download!



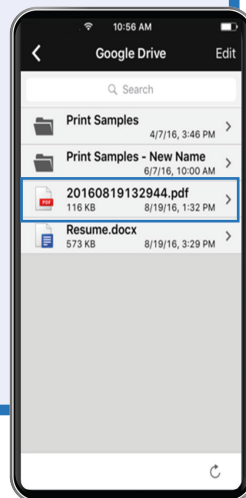
## Print with Canon PRINT Business App

Print documents saved in a cloud location or local to your mobile device

1 Select **"Documents"** in the application and choose the file location.



2 Choose the **file** you want to print.



3 Preview the file and tap the **printer icon**.



4 Confirm your printer and select print/finishing settings. Tap **"Print."**



Note: Print/Finishing options available: Output Size, Copies, Print Range, Paper Source, Select Color Mode, Simplex or Duplex, Staple, and 2-on-1. Available print/finishing settings differ, depending on the device model. If you set functions not supported by the device you're using, the settings will not be applied.

## Scan with Canon PRINT Business

Scanning to your mobile device is easy

**1** Add document to the imageRUNNER ADVANCE document feeder.

**2** Tap "Scan to Mobile" on the imageRUNNER ADVANCE control panel.

**3** Select your scan settings in the Canon PRINT Business app.

[Supported file types: PDF,\* JPEG, TIFF, OOXML (pptx), OOXML (docx), XPS\*\*]

**4** Save the scanned document to a local or cloud destination. Or, send it from your mobile device's email app.

SAVE

box, Evernote, Dropbox

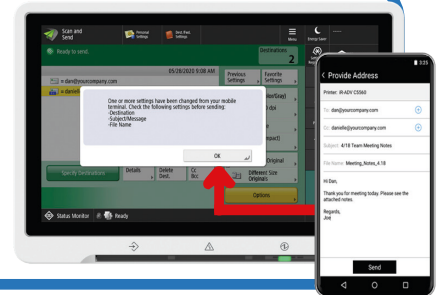
OR

SEND

\* Compact, OCR, and Encryption can be set.  
\*\* Can only be set when using the "Scan and Send" function.

## Easier Sending from the MFP with Canon PRINT Business

The "Provide Address" feature of the Canon PRINT Business app allows you to use your mobile device to fill in send destinations (including using your mobile device contacts), subject name, message body, and file name fields on the imageRUNNER ADVANCE "Scan and Send" screen. This helps reduce touch-points at the control panel when sending documents to destinations from the imageRUNNER ADVANCE MFP.



Learn more about the Canon PRINT Business app on Canon U.S.A.'s YouTube [Enterprise Solutions Playlist](#).

For more technical questions and information, please refer to the online manual for [iOS](#) and [Android](#).

Note: This document assumes the mobile device and MFP are on the same network.

[USA.CANON.COM/SIMPLYADVANCED](http://USA.CANON.COM/SIMPLYADVANCED)



Subscription to a third-party cloud service required. Subject to third-party cloud service providers terms and conditions. Neither Canon Inc. nor Canon U.S.A., Inc. represents or warrant any third-party product or feature referenced hereunder. Canon and imageRUNNER are registered trademarks or trademarks of Canon Inc. in the United States and may also be registered trademarks or trademarks in other countries. App Store is a registered trademark of Apple Inc. Google Play is a registered trademark of Google LLC All other referenced product names and marks are trademarks of their respective owners. Specifications and availability subject to change without notice. Not responsible for typographical errors.  
©2020 Canon U.S.A., Inc. All rights reserved.